



**TRAFFORD
COUNCIL**

**AGENDA PAPERS FOR
TRAFFORD COVID-19 PUBLIC ENGAGEMENT BOARD**

Date: Wednesday, 1 December 2021

Time: 10.00 am

Place: Virtual meeting

<https://www.youtube.com/channel/UCjwblOW5x0NSe38sgFU8bKg>

A G E N D A	PART I	Pages
1.	ATTENDANCES To note attendances, including officers, and any apologies for absence.	
2.	DECLARATIONS OF INTEREST Members to give notice of any interest and the nature of that interest relating to any item on the agenda in accordance with the adopted Code of Conduct.	
3.	MINUTES To receive and, if so determined, to approve as a correct record the Minutes of the meeting held on 17 th November 2021.	1 - 4
4.	UPDATE ON THE CURRENT COVID-19 SITUATION IN TRAFFORD To receive an update from the Director of Public Health.	5 - 20
5.	10 POINT PLAN UPDATE (a) Mass Testing To receive a verbal update from the Strategic Testing Lead (b) Contact Tracing and Outbreak Management To receive a verbal update from a Consultant in Public Health (c) Mass Vaccination	

To receive a verbal update from the Deputy Medical Director, Trafford CCG

(d) **Community Engagement**

To receive a verbal update from Regulatory Services

6. PUBLIC ENGAGEMENT BOARD ACTIVITY

For all Board Members to provide updates on any activity pertaining to the remit of the Board not covered elsewhere on the agenda

7. ANY OTHER BUSINESS

To consider any other items of business not on the agenda which need to be considered by the Board before the next confirmed meeting.

SARA SALEH

Deputy Chief Executive

Membership of the Committee

Council Leader or named Elected Member, nominated leads from opposition parties
VCSE representatives – including specialists relating to key population groups (older people; BAME; children; mental health , Learning Difficulties), Partnerships lead, Communications lead, Director of Public Health, Director of Adult Social Services, Director for Children's Services, Neighbourhood representatives, Clinical Commissioning Group representative, Trafford Local Care Organisation representative, Healthwatch Representative

Further Information

For help, advice and information about this meeting please contact:

Fabiola Fuschi,

Tel: 07813 397611

Email: Fabiola.fuschi@trafford.gov.uk

This agenda was issued on **Monday 29th November 2021** by the Legal and Democratic Services Section, Trafford Council, Trafford Town Hall; Talbot Road, Stretford, Manchester, M32 0TH

WEBCASTING

This meeting will be filmed for live and / or subsequent broadcast on the Council's website and / or YouTube channel <https://www.youtube.com/user/traffordcouncil>

The whole of the meeting will be filmed, except where there are confidential or exempt items.

Trafford Covid-19 Public Engagement Board - Wednesday, 1 December 2021

If you make a representation to the meeting you will be deemed to have consented to being filmed. By entering the body of the Committee Room you are also consenting to being filmed and to the possible use of those images and sound recordings for webcasting and/or training purposes. If you do not wish to have your image captured or if you have any queries regarding webcasting of meetings, please contact the Democratic Services Officer on the above contact number or email democratic.services@trafford.gov.uk

Members of the public may also film or record this meeting. Any person wishing to photograph, film or audio-record a public meeting is requested to inform Democratic Services in order that necessary arrangements can be made for the meeting. Please contact the Democratic Services Officer 48 hours in advance of the meeting if you intend to do this or have any other queries.

This page is intentionally left blank

Document Pack Page 1
Trafford Covid-19 Public Engagement Board

Wednesday 17th November 2021 – 10:00 a.m. – Virtual meeting

Present:

George Devlin (Chair)	Lay Member for Patient and Public Participation, Trafford Council
Councillor Newgrosh	Member of the Health Scrutiny Committee, Trafford Council
Councillor Welton	Ward Councillor, Trafford Council
Councillor Lloyd	Member of the Health Scrutiny Committee, Trafford Council
Helen Gollins	Consultant in Public Health, Trafford Council
Khan Moghal	Chair, Voice of BME Trafford
Dorothy Evans	Voluntary, African Caribbean Care Group
Rebecca Demaine	Associate Director of Commissioning – Primary Care, Trafford CCG
Ben Wilmott	Covid-19 Senior Project Manager, Trafford Council
Catherine O'Connor	Community Engagement Manager, Trafford Council
Jilla Burgess Allen	Consultant in Public Health, Trafford Council
Martin Dillon	Communications and Marketing Manager, Trafford Council
Kirsty Johnson	Covid-19 Project Manager, Trafford Council
Molly Shaw	Governance Services, Trafford Council
Alexander Murray	Governance Officer, Trafford Council

	Item	Decision / Action	Key Person for Action
1.	Welcome and apologies	Apologies were received from Councillor Freeman, Andrew Latham and Councillor Acton.	
2.	Minutes	The minutes of the meeting 3 rd November 2021 were agreed as an accurate record.	
3.	Membership	There had been no changes to the Membership since the last meeting.	
4.	Update on the current Covid-19 situation in Trafford	<p>The Board agreed to note the update.</p> <p>The following messages were shared with the Board:</p> <ol style="list-style-type: none"> 1. The rates across Trafford were decreasing with rates at 378 per 100,000; 2. The rates in Trafford remained high across the authorities in Greater Manchester; 3. The rates in over 60s had decreased to 144 per 100,000; 4. Testing and positivity rates were declining; 5. The 30-40s and 0-14 year old age groups had the highest rates; 6. Under 40 year olds had the lowest vaccination rates; 7. People needed to take additional care (even if vaccinated) by avoiding crowded places, meeting people outdoors where possible, wearing a mask, 	All

		keeping up with hand hygiene, and working from home if able.	
5.	10POINT ACTION PLAN		
5a.	Mass Testing	<p>The Board agreed to note the update. The following messages were shared with the Board:</p> <ol style="list-style-type: none"> 1. The testing rate at the asymptomatic testing site at Trafford Town Hall had declined which lead to a reduced opening hours of two days a week; 2. There had been a reduction in Trafford's testing rates but still had the highest across Greater Manchester; 3. Testing at home twice weekly with Lateral Flow tests should continue; 4. If experiencing symptoms to get a PCR test. 	All
5b.	Contact Tracing and Outbreak Management	<p>The Board agreed to note the update. The following messages were shared with the Board:</p> <ol style="list-style-type: none"> 1. 4 Primary schools and 0 secondary schools were meeting the outbreak threshold; 2. There were 30 primary schools and 13 secondary schools with cases; 3. The team had followed up Level 2 cases over the past week with 80% contacted and 70% with full contact tracing completed. 	All
5c.	Mass Vaccination	<p>The Board agreed to note the update. The following messages were shared with the Board:</p> <ol style="list-style-type: none"> 1. The booster vaccine programme had vaccinated 66% of the eligible population and was now being offered to 40-49 year olds; 2. There was now a requirement for frontline NHS staff to be fully vaccinated by Spring; 3. Messaging had gone out regarding the booster jab being the Pfizer vaccine; 4. All staff and residents in working age adult care homes were being offered the vaccine by 1st December. 	All

5d.	Update and escalations from the COVID-19 Community Engagement Group	<p>The Board agreed to note the update.</p> <p>The following messages were shared with the Board:</p> <ol style="list-style-type: none"> 1. The 'Well for Winter' programme was due to commence and included: <ol style="list-style-type: none"> a. Health messaging and calls to action b. Reflecting with communities c. Promoting vaccine confidence d. Building on networks e. Carrying out events 2. The team were carrying out work to target residents to understand why they haven't had the vaccine. 	N/A
6.	Public Engagement Board Activity and Feedback	None	
7.	Any Other Business	None	
8.	Date of Next Meeting	Wednesday 1 st December 2021 at 10:00 a.m.	

This page is intentionally left blank

Public Engagement Board

COVID-19 Programme Team

CLT Lead: Helen Gollins, Director Public Health Trafford

1 December 2021

Data surveillance update paper to Public Engagement Board

Report Summary:

This paper provides an update on the current data position for COVID-19 within Trafford and provides comparative information with other GM localities. Data insights into any potential trends are provided based on best available public health information and intelligence available.

Trafford's Public Health Team are ensuring that our systems are fit for purpose in light of reports of a new variant. At the time of publication (29/11/21) there are no known cases of Omicron in Trafford.

Overview of the current position:

Overview

- There were **997** confirmed cases during the week ending Wednesday 24 November, with the highest number of cases (**183**) reported on **Monday 22 November**.
- We have seen an increase in our 7 day case rate to **419.6/100k** from **384.7/100k** in the previous week. Most recent data suggests we will see further increases in our case rate over the coming days.
- Trafford's case rate is above the North West average (**377.7/100k**) but below the England average (**440.1/100k**). Trafford has the 3rd highest case rate across GM.
- Trafford's testing (at **582.7/100k** from **562/100k**) and positivity rate (at **10.6%** from **10%**) has increased slightly from the previous week.

Age Profiles

- When compared to the previous week, case rates have increased for all age groups below 60 years.
- Case rates are now highest for 5-9 year olds (at **1189.8/100k**), increasing by **53.9%** from the previous week.

- We have seen further rate reductions for residents aged 60+, decreasing to a rate of **122.3/100k** from **133.4/100k** in the previous week.
- We have seen further PCR testing increases for 0-14 year olds, whilst testing is mostly stable for the adult population.

Geography

- Cases are widespread across the borough. We are now starting to see more variation in case rates by geography.
- Case rates are lowest in Trafford North.
- Case rates are highest for the wards of Priory (**680/100k**), Hale Central (**609.5/100k**), Davyhulme West (**549.5/100k**), Bowdon (**547.3/100k**), and Ashton upon Mersey (**543.2/100k**).
- Case rates have increased most for Trafford Central during the most recent week: Priory (**+135.3%**) and Brooklands (**+67.7%**).

Hospital Activity

- We have seen a reduction in hospital admissions over the past four weeks. We are seeing a similar trend for the North West region.
- There were **114** COVID-19 admissions during the week ending Sunday 21 November compared with **130** COVID-19 admissions during the previous week (*Including Manchester University Foundation Trust, Stockport Foundation Trust, and Warrington & Halton Teaching Hospitals Foundation Trust*).

Public Health Concern

Trafford's case rate reached the highest in the country on 9th October 2021 after peaking at a rate of **846.8/100k** (for the 7 days up to 09 October). We have seen a sharp reduction in Trafford's case rate since early October, however most recent data shows an increase, with rates above 400/100k. Case rates have been increasing for young persons below the age of 17 over the past two weeks, and more recently (past week) for adults below the age of 60.

Our testing rate remains highest across the 10 GM boroughs, with little change over the past two weeks. Most recent data, however, shows an increase in the number of tests by Trafford residents. We are also starting to see a slight rise in our positivity rate, although 4th lowest across the 10 GM boroughs.

Despite recently dropping below the England average (**439.8/100k** for the 7 days up to 24 November), our case rate remains high, well above the North West average (**377/100k**). We need to halt and reduce our current rate to protect our vulnerable populations, especially those aged 60+ and/or with preexisting health conditions.

The successful roll-out of COVID-19 vaccinations, including booster vaccinations has helped weaken the link between infection and hospital admissions/COVID-19 mortality, however there are still just under 1/5 of eligible residents not vaccinated with at least 1 dose. Despite the successful roll out of the vaccine programme, we have seen inequalities in uptake, specifically linked to decreasing age and geographical areas with highest levels of deprivation. We are seeing a consistent trend in these inequalities as the vaccine has been rolled-out to younger age groups.

Although the North West (including surrounding hospitals to Trafford) has recently seen an overall reduction in hospital admissions linked to COVID-19, hospitals have still experienced a sustained period of COVID-19 admissions, ever since the relaxation of lockdown measures in July 2021. We are now coming into the winter months where NHS pressures increase, and thus the need to keep hospital admissions low is imperative. Overall mortality trends is also a growing concern, as since the beginning of the pandemic (March 2020), registered deaths exceed expected deaths (1.13 times nationally; 1.14 times for Trafford).

Vaccines offer protection but risk of infection is still present if borough-wide transmission is not controlled. We have started to see case rates stabilise over the past two weeks, however we recognise that we must not be complacent as a borough and we will continue to focus our efforts on reinforcing COVID-19 secure measures. We will continue to support areas with lower uptake of vaccinations (especially in over 60s) for preventative measures and to improve vaccination uptake.

Outbreak Management and Risk Reduction

Business settings

- From 4am Tuesday 30 November, face coverings will be compulsory in shops and other settings such as banks, post offices and hairdressers, as well as on public transport unless individuals are exempt from doing so.
- Travellers arriving into the country from 4am on Tuesday 30 November will be required to take a PCR test on or before day two and self-isolate until they have received a negative test result. These PCR tests can be purchased from private providers. Free NHS tests are not valid for this purpose.
- We continue to urge all businesses to make their workplaces COVID-19 secure, including ensuring that staff are routinely testing and properly protected when they return to the workplace.
- We continue to promote the importance of COVID-19 vaccinations for all eligible populations.
- We are monitoring the impact of events on Covid rates in the borough.

Health & Social Care Settings

- We need to work together to keep our most vulnerable populations protected. We are managing outbreaks in care homes. While some fully vaccinated staff and

residents are testing positive, their disease is much milder than in unvaccinated people.

- Care home should continue to PCR test residents and staff every 28 days and staff should also do twice weekly LFD testing.
- Vaccination remains a safe and effective method of protecting yourself from severe illness.
- We will be encouraging all health and social care settings to continue to use all the current infection prevention and control measures to keep staff and service users safe.
- Trafford have recommended that providers pause indoor visiting by children and young people aged 16 and under. Exceptions include end of life visits, and visits that include outdoor socially distanced visits. This enhanced measure was reviewed on 29/11 and the recommendation is that it continues for a further two weeks. Safe visiting support is being developed by Public Health and commissioning.

Education & Early Years Settings

- Secondary school pupils should continue with twice weekly LFD testing and all staff/pupils should wear face coverings in communal areas.
- We'd like to encourage people to register negative LFD test results on the national testing portal.
- Any children identified as a close contact should have a PCR test.
- School **household contacts**; children and young people and staff who attend/work in schools and are household contacts should do daily LFD testing for a period of 10 days.
- There are currently enhanced measures in Trafford's early years and education settings which includes the wearing of face coverings. Given the current COVID-19 Omicron national guidance, face coverings and other enhanced measures will be reviewed in three weeks' time.

Contact Officer:

Name: Tom Seery, Public Health Data Surveillance Analyst

Tel: 07929876642

Email: Thomas.seery@trafford.gov.uk

1.0 Vulnerable Population groups

1.1 We have seen a sharp reduction in cases for residents aged 60+ over the past two weeks.

1.2 Table 1 shows that we are now starting to see less variation in the 60+ case rate by geography. Rates are highest for Trafford Central and lowest for Trafford North.

Table 1. Case count and incidence per 100,000 population by ethnicity

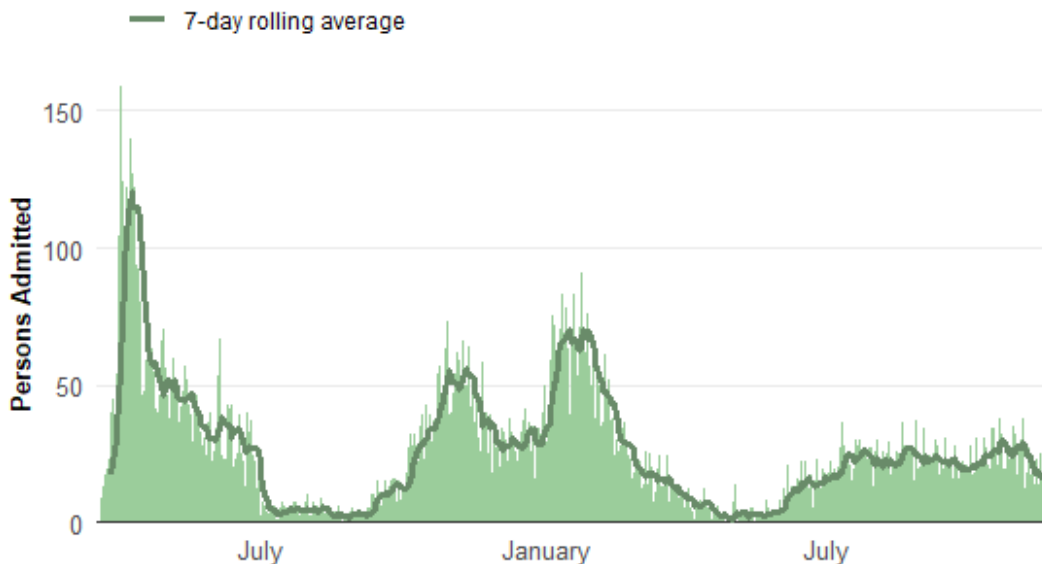
Trafford, 11 October to 24 November 2021

	Previous Week	Current Week	Percentage Change
Central	153.5	184.2	-25.0
South	123.8	92.9	33.3
West	103.1	162.0	-36.4
North	94.5	94.5	0.0

1.3 We have seen further reductions in the number of hospital admissions associated with COVID-19 over the past week. We are also seeing a similar trend in reducing hospital admissions for the North West region

Figure 1. Daily Count of COVID-19 Hospital Admissions (including *Manchester University Foundation Trust, Stockport Foundation Trust, and Warrington & Halton Teaching Hospitals Foundation Trust*).

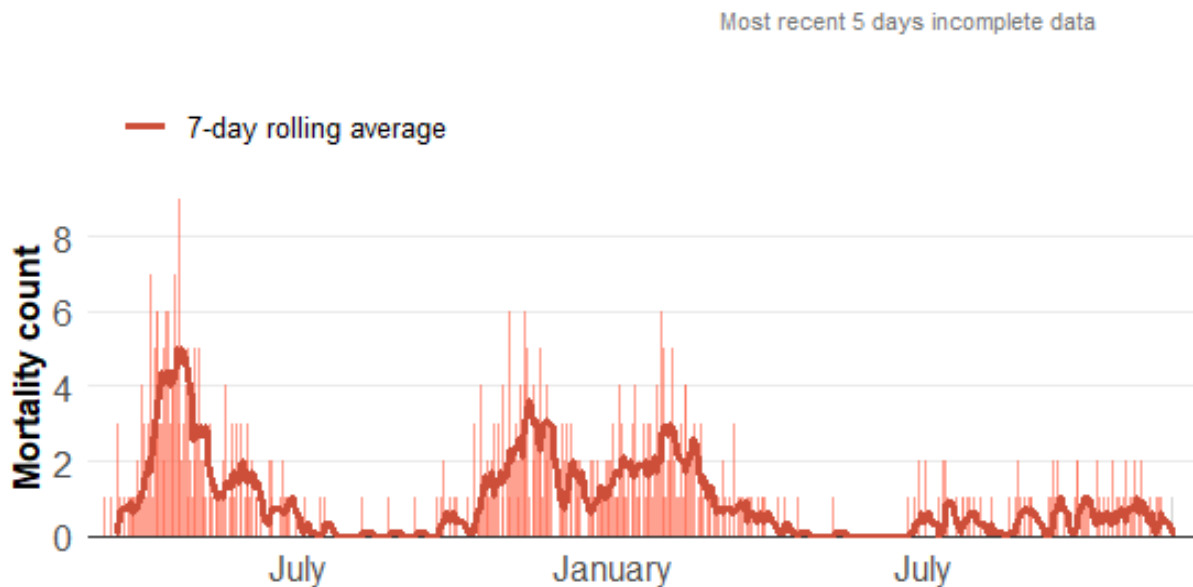
19 March 2020 to 21 November 2021



Source: PHE Coronavirus Dashboard

1.4 We have seen small reductions in the number of deaths linked to COVID-19 over the past 4 weeks (when compared to the previous 2-week period).

Figure 3. Daily Count of COVID-19 deaths within 28 days of positive test result
11 March 2020 to 27 November 2021



2.0 Trend of COVID-19 cases within Trafford

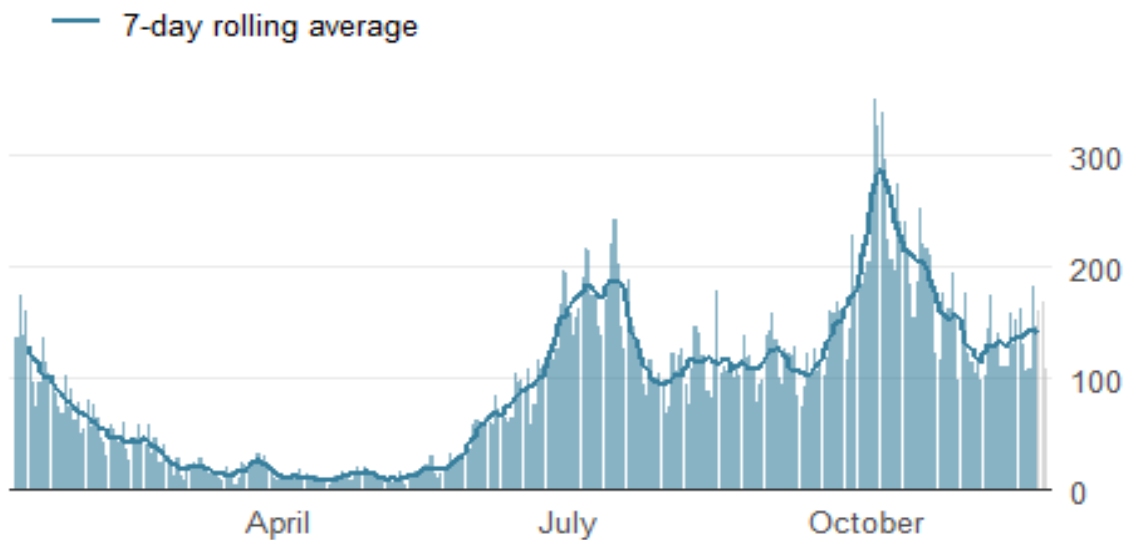
2.1 Daily positive cases spiked in early October, exceeding 300 daily cases and leading to a 7-day case rate greater than **800/100k**.

2.2 Our case rate peaked at a rate of **846.8/100k** for the 7 days up to October 9th, reaching highest in the country.

2.3 Case rates dropped throughout the month of October and moving into early November. We have seen mostly stable case rates over the past two weeks, however recent days shows an increase in daily cases, increasing our case rate back above **400/100k**.

Figure 3. Epidemic curve of daily confirmed new cases

Trafford, 28 December 2020 to 26 November 2021



3.0 Age profiles

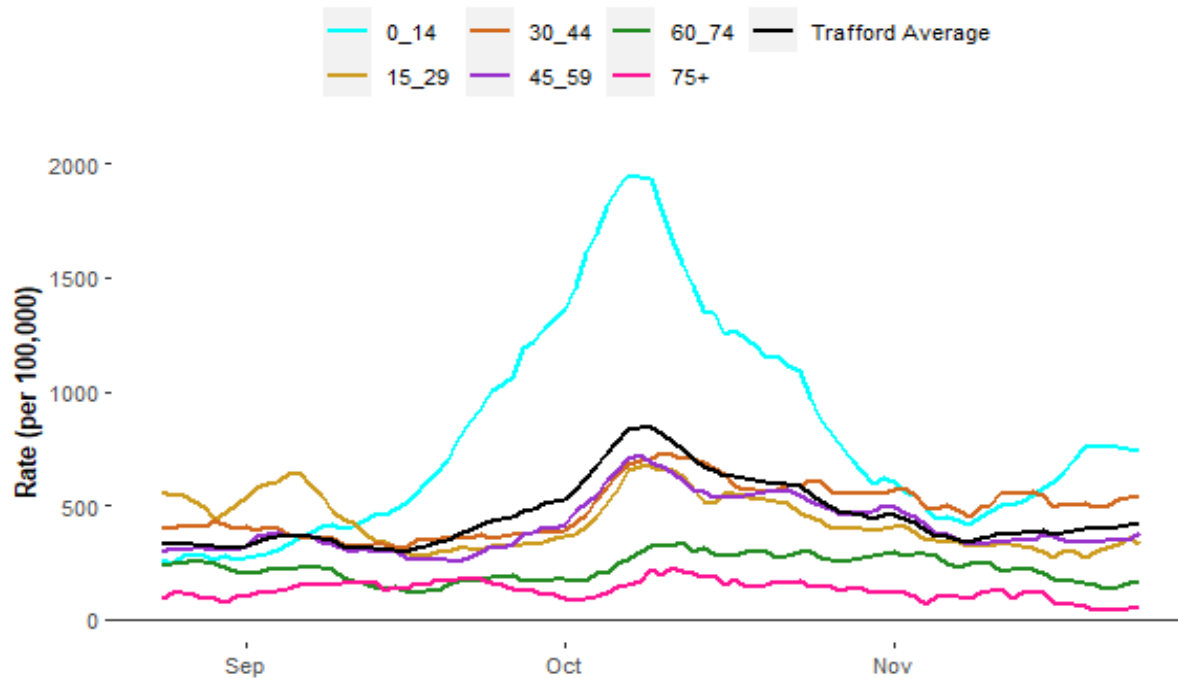
3.1 When compared to the previous week, case rates have increased for all age groups below the age of 60.

3.2 Case rates remain highest for 0-14 year olds (at **740.5/100k** from **645.8/100k** in the previous week) but most recent days shows a levelling-off of rates for this age group.

3.3 Case rates remain low for residents aged 60+, dropping to **122.3/100k** from **133.4/100k** in the previous week.

Figure 4. Age-specific case rates per 100,000 population Trafford, 7-day moving average)

Trafford, 26 August 2021 – 24 November 2021



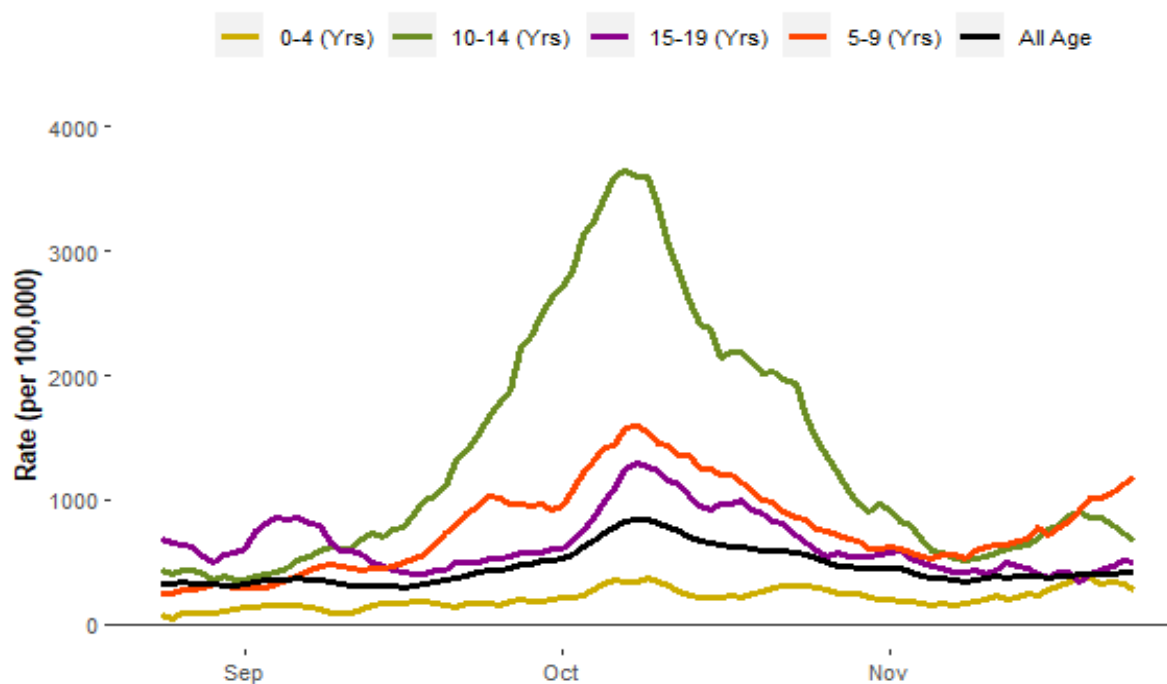
3.4 Case rates have continued to rise for young persons aged 5-9, whilst rates have started to drop for 10-14 and 0-4 year olds.

3.5 Case rates are highest for 5-9 year olds (at **1189.8/100k**), increasing by **53.9%** from the previous week.

3.6 Case rates are mostly stable for 15-19 year olds, but are above the Trafford average.

Figure 5. School case rate per 100,000 residents (7-day moving)

Trafford, 26 August to 24 November 2021



4.0 Geographical spread of COVID-19 in Trafford

4.1 Case rates have increased for 12 wards, dropped for 8 wards, and remain unchanged for 1 ward when compared to the previous week.

4.2 We are seeing case rates widespread across the borough, but are starting to see more variation in rates by geography as rates are lowest in Trafford North when compared to Trafford's 3 other localities.

4.3 Case rates have increased most for Trafford Central during the most recent week: Priory (+135.3%) and Brooklands (+67.7%).

4.4 Case rates are highest for the wards of Priory (680/100k), Hale Central (609.5/100k), Davyhulme West (549.5/100k), Bowdon (547.3/100k), and Ashton upon Mersey (543.2/100k).

5.0 PCR Testing

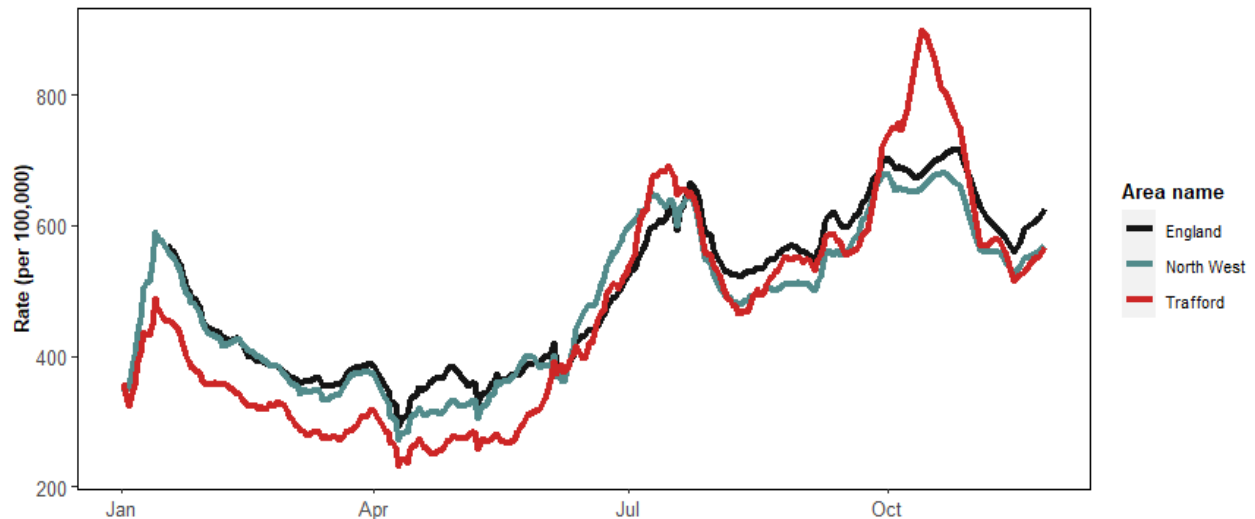
5.1 Trafford's testing rate peaked on October 10th, carrying out **900** daily tests per 100,000 residents, well above the England and North West averages.

5.2 We have seen a sharp reduction in testing since early October and more recently closely resembling the average testing rates for England and the North West.

5.3 However, data over the most recent week shows an increase in Trafford's testing rate, as well as national and regional increases.

5.4 As of November 24, Trafford's daily testing rate sits at **582.7/100k** which is an increase from the previous week (**562/100k**). Trafford's testing rate is above the North West average (**567/100k**) but below the England average (**642.4/100k**).

Figure 6. Daily testing rate (7-day average): England, North West, & Trafford
Trafford, 01 January to 22 November 2021

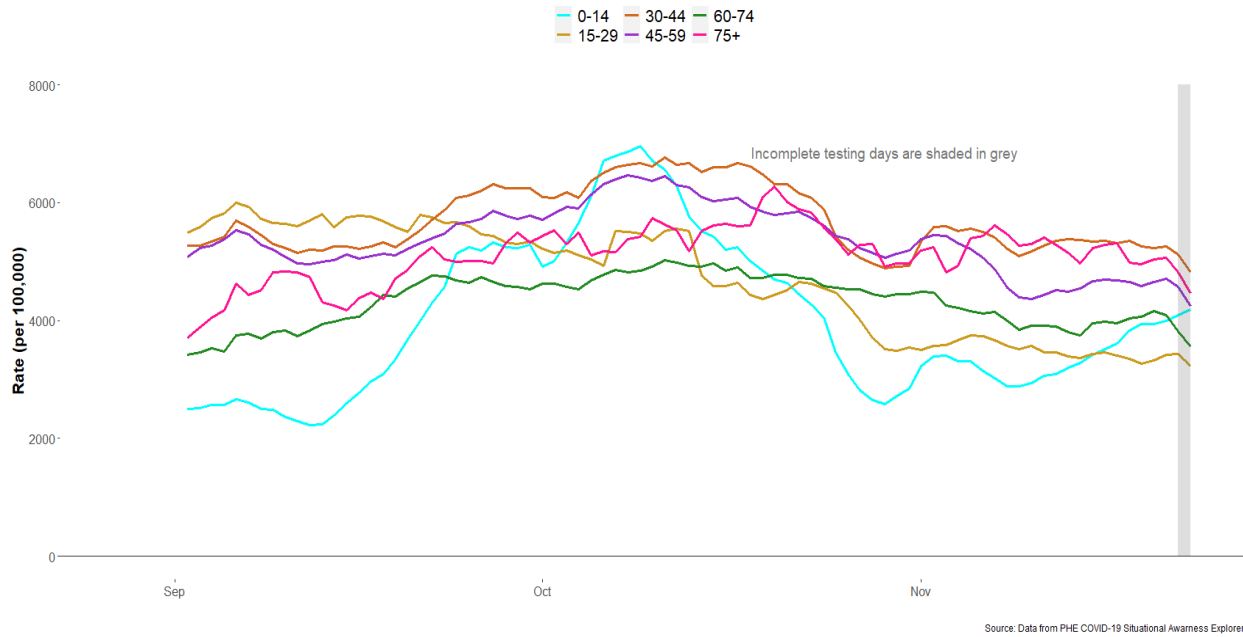


5.5 When compared to the previous week, testing rates have continued to rise for 0-14 year olds, but have been mostly stable for all other age groups.

5.6 Most recent days show a slight increase in testing for 45-74 year olds.

5.7 Testing rates are now highest for 30-44 year olds, followed by residents aged 75+.

Figure 7. Age-Specific Testing rate per 100,000 residents (7-day moving)
 Trafford, 2 September to 23 November 2021



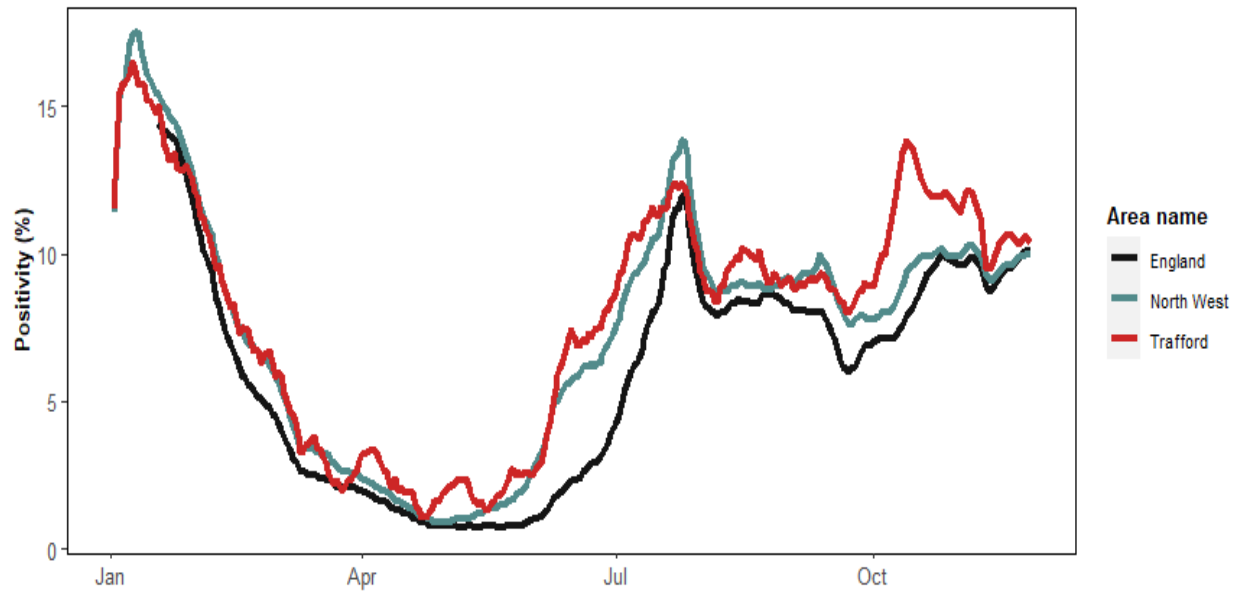
6.0 Positivity

6.1 Following a 3-week period where we were seeing reductions in our positivity rate, we have started to see an increase in positivity, remaining above the North West and England averages.

6.2 As of November 24, Trafford's 7-day positivity rate sits at **10.6%** which is an increase from the previous week (**10%**). Trafford's positivity rate is above the North West (**9.8%**) and England averages (**10%**).

Figure 8. 7-day Positivity rate: England, North West, & Trafford

Trafford, 01 January to 22 November 2021



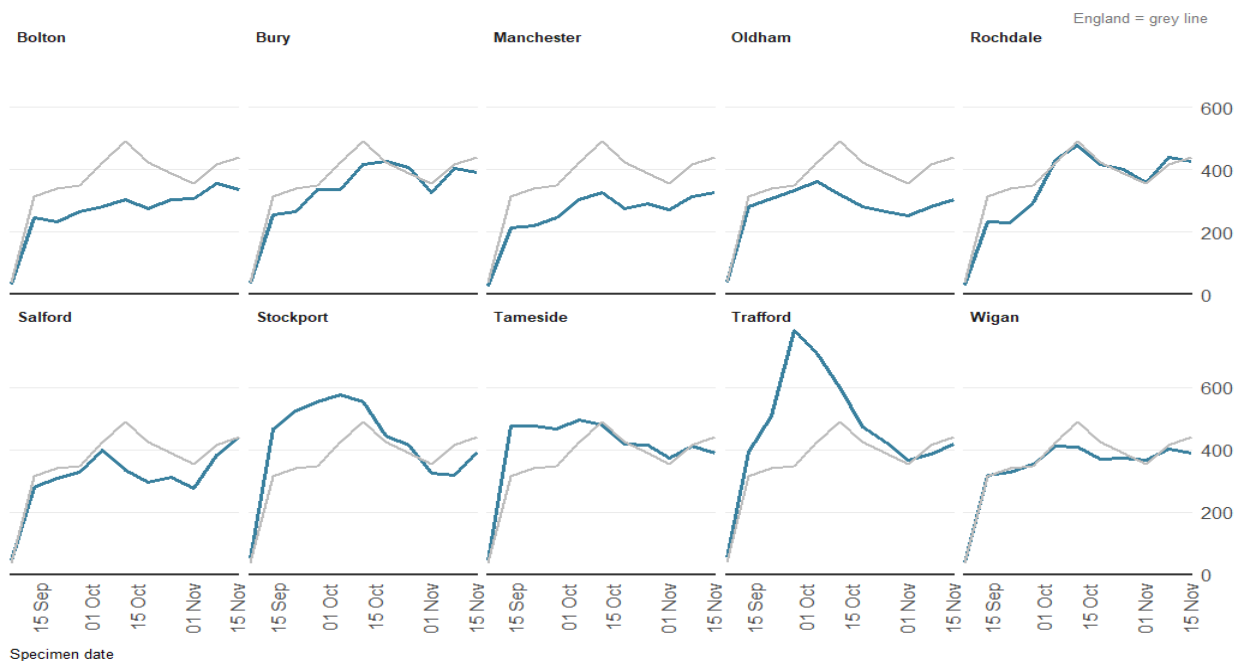
7.0 Comparative data of COVID-19 cases within the local authorities of Greater Manchester

7.1 Trafford saw the sharpest rise in its case rate throughout September and October, followed by Stockport.

7.2 Most recent data shows that most boroughs are starting to see an increase in their case rate. Salford is the only borough to have a higher rate than the England average (for the 7 days up to November 24).

7.3 Trafford has the 3rd highest case rate across the GM boroughs.

Figure 9. Weekly incidence per 100,000 population by local authority
Greater Manchester, 18 September to 24 November 2021



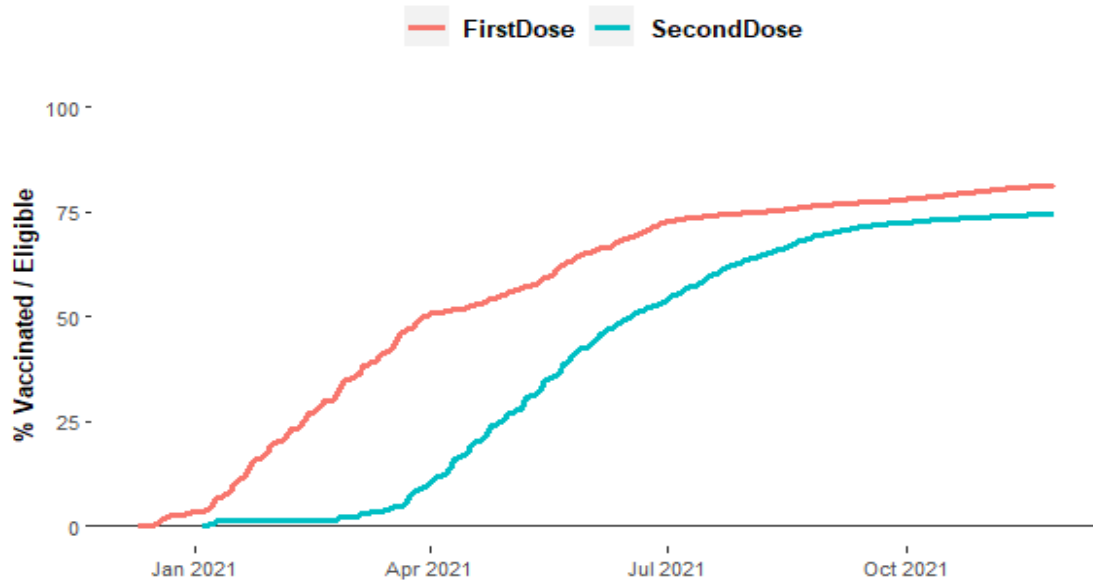
8.0 Vaccinations

8.1 The total percentage of Trafford residents (Aged 12+) administered their first vaccine dose by **27-11-2021** was **81.5%**

8.2 The total percentage of Trafford residents (Aged 12+) administered both vaccine doses by **27-11-2021** was **74.6%**

Figure 10. Running total of first and second dose vaccines for Trafford residents (12 years and above)

Trafford, 09 December to 27 November 2021

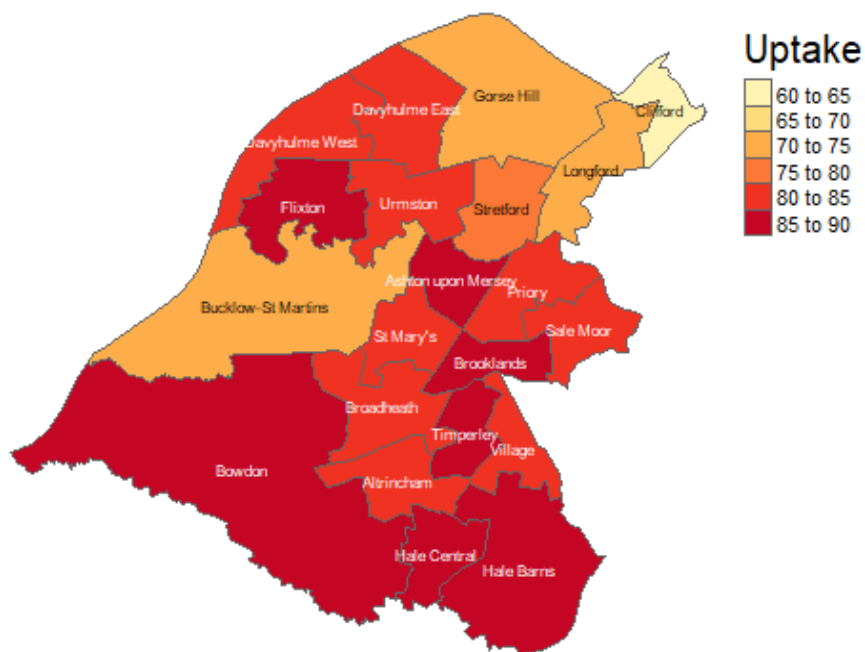


Source: COVID-19 Situational Awareness Explorer

8.3 Vaccine uptake is lowest in Trafford North and highest for Trafford South.

8.4 We are seeing variation in vaccine uptake (first dose) across the borough, ranging from **64.8%** (Clifford ward) to **89.3%** (Timperley ward).

Figure 11. First dose vaccine uptake (%) for all eligible residents (12+) by Ward Trafford, up to 28 November 2021



This page is intentionally left blank